



nisarg dreams

2 bhk

lifestyle apartments
@ Shilaj

your dream turn in to reality



2 BHK lifestyle apartments

Peaceful & Green atmosphere

On 200' S.P. Ring Road, Nr. Shilaj Over bridge



convenient



comfortable lifestyle





Layout Plan



12.00 MT ROAD





green  peaceful atmosphere



Parking Facility on Ground floor & Basement



Hi-Tech Security System in Common Area



Provision for DTH



Activity area



Children's play area



Children Drop Off Area



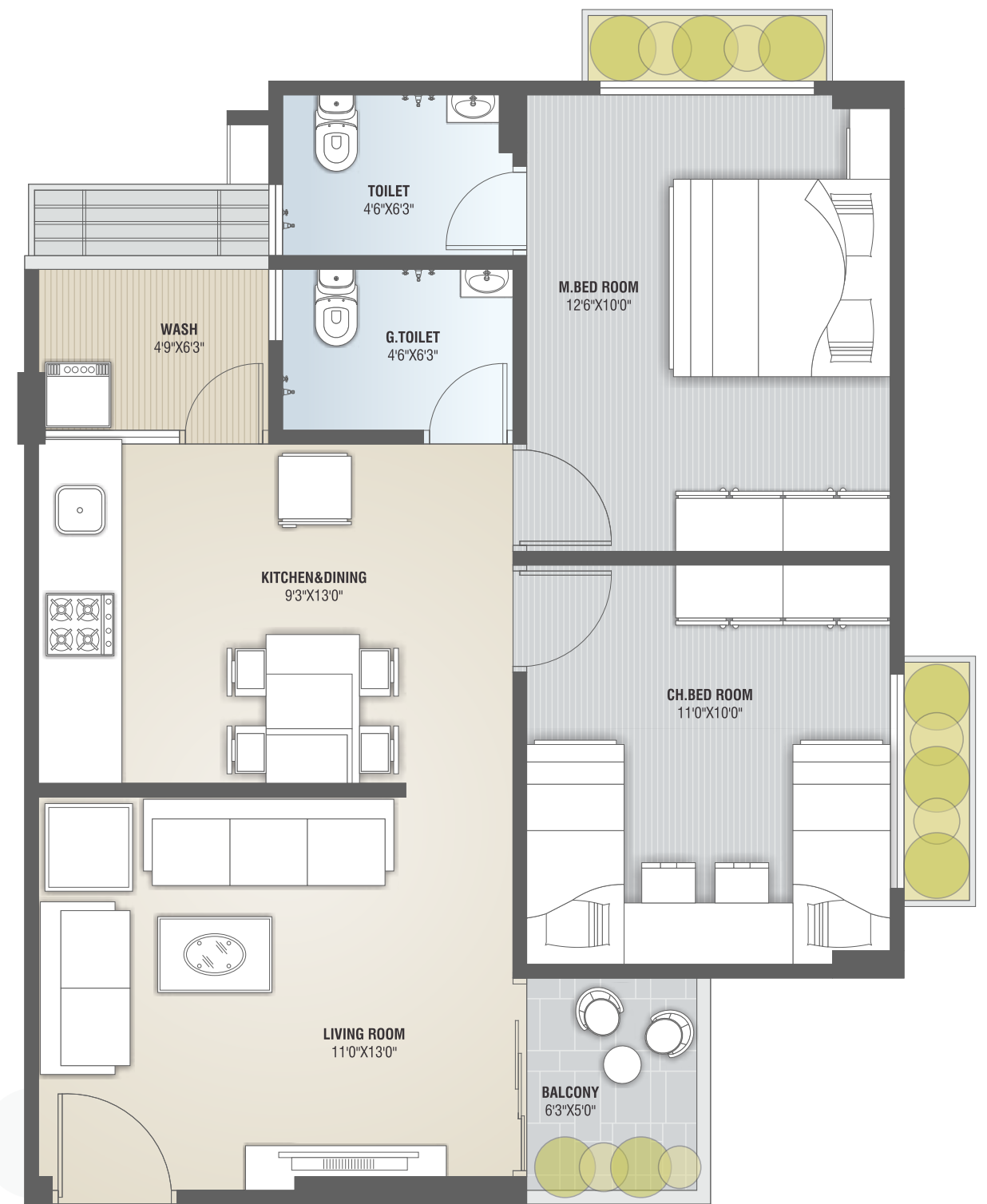
Exquisite Landscape with Pleasant Sit Outs



Bore well, Under Ground / Over Head Water Tank



2BHK unit
1050 sq.ft.



Block A,B,C



2BHK unit
1200 sq.ft.



Block D



well design  well ventilated



Site : **Nisarg Dreams**, Nr. Divya Jyot International School, Nr. Shilaj Over bridge, 200' S.P. Ring Road, Shilaj, Ahmedabad.

Specifications

Flooring

A Unique Design Premium Quality
Vitrified Tiles in all Areas.

Kitchen

Granite platform with S.S. sink, 4' ht. Tiles dado
Kota stone floor in wash area

Doors

Decorative Main Door with Wooden Frame
Other Doors are Flush Doors

Windows

Aluminum sliding windows with Stone Jambs

Toilets

Western Concept Designed Toilets. Tiles up to lintel
level. CP brass fittings. Good quality corrosion free
& leak proof CPVC / UPVC pipe fitting.

Electrification

Concealed ISI copper wiring with modular switches.
MCB distribution panel. AC point / TV point in
Master Bedroom.

Colour

Internal - Putty finish, Exterior - 100% acrylic paint

Elevator

Premium Quality Elevators



Developer



Mo : 90990 99460

Architect



associated architect (I) pvt. ltd.

Structural Engineer

Bhoomi Consultant

Notes

- This brochure is for schematic representation only is not supposed to be treated as part of document.
- The following charges will be payable separately by the members.
- AUDA, legal and GEB charge 125/- per SQ.FT
- Maintenance Deposit Rs.50000/-(fifty thousand)
- Running Maintenance 1 Rs/sqft per month up to 18 month
- Service tax / Stamp duty /Vat /any other govt. levied charges –as per actual.
- In case of any other incidental charges in charge by the concerned authorities, the same shall be payable by the members.
- No change / alteration in the external elevation, specification, structural design, or the overall design and outlook of the scheme shall be permitted even after the possession is handed over.
- All common areas, passages, staircase etc cannot be used by the members for placing any material or goods.
- All matters subject to Ahmedabad jurisdiction only.